

TI-RTOS 2.14 for CC32xx SimpleLink™ Wireless MCUs

Getting Started Guide



Literature Number: SPRUH08D
August 2015

Preface	3
1 About TI-RTOS	4
1.1 What is TI-RTOS?	4
1.2 What are the TI-RTOS Components?	5
1.3 How Can I Find Example Projects?	6
1.4 What Compilers and Targets are Supported?	7
1.5 What Boards and Devices Have TI-RTOS Driver Examples?	7
1.6 What Drivers Does TI-RTOS Include?	7
1.7 For More Information	8
2 Installing TI-RTOS	10
2.1 System Requirements	10
2.2 Installing Code Composer Studio	11
2.3 Installing TI-RTOS in Code Composer Studio	11
2.4 Installing TI-RTOS for Use in IAR Embedded Workbench	12
2.5 Installing TI-RTOS as a Standalone Product	12
3 Examples for TI-RTOS	13
3.1 Creating Example Projects Using the Resource Explorer in CCS	14
3.1.1 Creating an Empty TI-RTOS Project	16
3.1.2 Creating Examples to Build via a Command Line	17
3.2 Creating Examples with IAR Embedded Workbench	18
3.3 Summary of Example Peripheral Use and Target Support	18
3.3.1 Readme Files and Common Driver Example Features	19
3.4 CC3200 SimpleLink LaunchPad Settings and Resources	20
3.5 BoosterPacks	21
3.5.1 SD Card BoosterPack	21
3.5.2 TMP006 I2C Sensor	22
3.5.3 CC3200 BoosterPacks	22
3.6 <Board>.c File and PinMux Tool Integration	23
3.7 Using Driverlib in ROM	25
4 Configuring TI-RTOS	27
4.1 Starting the Configuration Tool	28
4.2 Configuring TI-RTOS Drivers	29
4.2.1 Configuring System Support	30
4.3 Configuring Components of TI-RTOS	30
Index	31

Read This First

About This Manual

This manual describes TI-RTOS for SimpleLink™ Wireless MCUs. The version number as of the publication of this manual is v2.14.

Notational Conventions

This document uses the following conventions:

- Program listings, program examples, and interactive displays are shown in a special typeface. Examples use a bold version of the special typeface for emphasis.

Here is a sample program listing:

```
#include <xdc/runtime/System.h>
int main(void)
{
    System_printf("Hello World!\n");
    return (0);
}
```

- Square brackets ([and]) identify an optional parameter. If you use an optional parameter, you specify the information within the brackets. Unless the square brackets are in a **bold** typeface, do not enter the brackets themselves.

Trademarks

Registered trademarks of Texas Instruments include Stellaris and StellarisWare.

Trademarks of Texas Instruments include: the Texas Instruments logo, Texas Instruments, TI, TI.COM, C2000, C5000, C6000, Code Composer, Code Composer Studio, Concerto, controlSUITE, DSP/BIOS, MSP430, MSP430Ware, MSP432, SimpleLink, Sitara, SPOX, TI-RTOS, Tiva, TivaWare, TMS320, TMS320C5000, TMS320C6000, and TMS320C2000.

ARM is a registered trademark, and Cortex is a trademark of ARM Limited.

Windows is a registered trademark of Microsoft Corporation.

Linux is a registered trademark of Linus Torvalds.

IAR Systems and IAR Embedded Workbench are registered trademarks of IAR Systems AB.

All other brand or product names are trademarks or registered trademarks of their respective companies or organizations.

August 7, 2015

About TI-RTOS

This chapter provides an overview of TI-RTOS for SimpleLink™ Wireless MCUs.

Topic	Page
1.1 What is TI-RTOS?	4
1.2 What are the TI-RTOS Components?	5
1.3 How Can I Find Example Projects?	6
1.4 What Compilers and Targets are Supported?	7
1.5 What Boards and Devices Have TI-RTOS Driver Examples?	7
1.6 What Drivers Does TI-RTOS Include?	7
1.7 For More Information	8

1.1 What is TI-RTOS?

TI-RTOS is a scalable, one-stop embedded tools ecosystem for TI devices. It scales from a real-time multitasking kernel (SYS/BIOS) to a complete RTOS solution including additional middleware components and device drivers. By providing essential system software components that are pre-tested and pre-integrated, TI-RTOS enables you to focus on creating your application.

TI-RTOS is *not* installed automatically as part of the Code Composer Studio v6.x installation. You can install TI-RTOS from the CCS App Center (choose **View > CCS App Center** in CCS). Choose the version of TI-RTOS for your device family. If you use devices in multiple families, you can install multiple TI-RTOS versions. See [Section 2.3](#) for details.



If you do not use CCS, you can [download and install TI-RTOS as a standalone product](#) (see [Section 2.5](#)). In addition to the Texas Instruments Code Generation Tools, TI-RTOS includes support for the IAR and GNU tool chains (see [Section 2.4](#)).

TI-RTOS is provided with full source code and requires no up-front or runtime license fees.

1.2 What are the TI-RTOS Components?

TI-RTOS contains its own source files, pre-compiled libraries (both instrumented and non-instrumented), and examples. Additionally, TI-RTOS contains a number of components within its "products" subdirectory. The components of TI-RTOS for SimpleLink Wireless MCUs are as follows.

Table 1–1. TI-RTOS Components

TI-RTOS Component	Name	PDF Documentation Location
TI-RTOS	TI-RTOS examples	Chapter 3 of this Getting Started Guide
TI-RTOS Kernel	SYS/BIOS	<i>SYS/BIOS (TI-RTOS Kernel) User's Guide</i> -- SPRUEX3
TI-RTOS Instrumentation	UIA	<i>System Analyzer User's Guide</i> -- SPRUH43
TI-RTOS File System	FatFS	<i>TI-RTOS User's Guide</i> -- SPRUHD4
TI-RTOS Drivers and Board Initialization	Drivers and CC3200 SDK's driverlib	<i>TI-RTOS User's Guide</i> -- SPRUHD4

The components in the "products" subdirectory are:

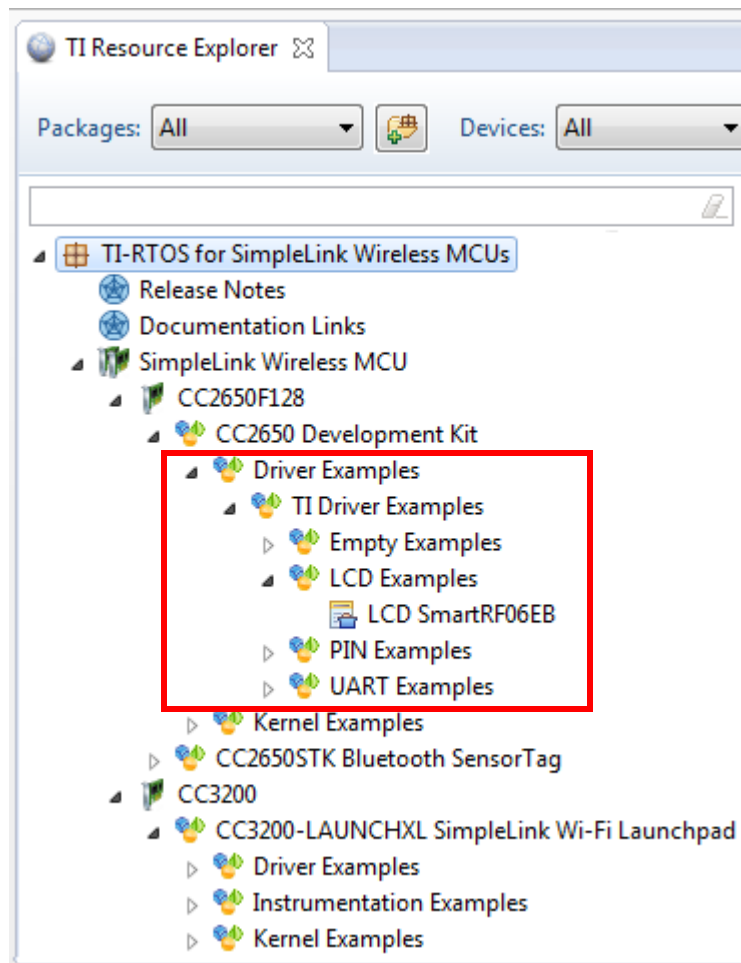
- **TI-RTOS Kernel — SYS/BIOS.** SYS/BIOS is a scalable real-time kernel. It is designed to be used by applications that require real-time scheduling and synchronization or real-time instrumentation. It provides preemptive multi-threading, hardware abstraction, real-time analysis, and configuration tools. SYS/BIOS is designed to minimize memory and CPU requirements on the target.
- **TI-RTOS Instrumentation — UIA.** The Unified Instrumentation Architecture (UIA) provides target content that aids in the creation and gathering of instrumentation data (for example, Log data).
- **SimpleLink CC3200 Driverlib** is a subset of the SimpleLink Wi-Fi CC3200 Software Development Kit (SDK) needed to use the drivers with CC3200. The Wi-Fi functionality is not included in this driverlib subset; to use Wi-Fi, download and install the **SimpleLink Wi-Fi CC3200 Software Development Kit (SDK)**. You can download this SDK at <http://www.ti.com/tool/cc3200sdk>. For details about using the Wi-Fi examples in the SDK, see the [TI-RTOS CC3200Wireless wiki page](#).
- **XDCtools.** This core component provides the underlying tooling for configuring and building TI-RTOS and its components. XDCtools is installed as part of CCS v6.x. If you install TI-RTOS outside CCS, a compatible version of XDCtools is installed automatically. XDCtools is installed in a directory at the same level as TI-RTOS, not in the "products" directory of the TI-RTOS installation.

1.3 How Can I Find Example Projects?

TI-RTOS and its components provide numerous examples that you can import using the **Resource Explorer** in Code Composer Studio (CCS). These examples use TI-RTOS and its components and have all the settings needed for your device. Expand the tree in the Resource Explorer to see the examples that are available for your device. Resource Explorer provides TI-RTOS examples for both the TI and GNU tool chains.

- **Driver Examples** are TI-RTOS driver examples.
- **Instrumentation Examples** are UIA examples.
- **Kernel Examples** are the SYS/BIOS examples.

Follow the steps in [Section 3.1](#) to import, build, and run these examples.



1.4 What Compilers and Targets are Supported?

The following code generation tool (compilers and linkers) versions are supported. The versions listed are recommended because they were used to build the TI-RTOS libraries and to perform testing. More recent versions are expected to be compatible.

- **Texas Instruments:** ARM CodeGen Tools v5.2.2
- **GCC:** gcc-arm-none-eabi-4_8-2014q3
- **IAR Workbench for ARM:** 7.40.1

The configuration uses a "target" specification during the build. This specification is sometimes called the "RTSC target." The targets supported are:

- CC3xxx
 - ti.targets.arm.elf.M4
 - iar.targets.arm.M4
 - gnu.targets.arm.M4

1.5 What Boards and Devices Have TI-RTOS Driver Examples?

Currently, TI-RTOS provides driver examples for the following board:

Family	Device on Board	Board
ARM	CC3200	CC3200 LaunchPad (called CC3200_LAUNCHXL in TI-RTOS code)

Examples are provided specifically for the supported boards, but libraries are provided for each of these device families, so that you can port the examples to similar boards. Porting information for TI-RTOS is provided on the [Texas Instruments Wiki](#).

1.6 What Drivers Does TI-RTOS Include?

TI-RTOS includes drivers for the following peripherals. These drivers are in the `<install_dir>/packages/ti/drivers` directory. TI-RTOS examples show how to use these drivers. Note that all of these drivers are built on top of the driverlib from the CC3200 SDK.

The TI-RTOS installation installed drivers for multiple device families. The following list indicates which drivers can be use with CC32xx targets:

- **Camera.** APIs to retrieve data transferrer by a camera sensor.
- **I²C.** API set intended to be used directly by the application or middleware.
- **I²S.** API set for support of Inter-IC Sound interface standard.
- **GPIO.** API set intended to be used directly by the application or middleware to manage the GPIO interrupts, pins, and ports.
- **PWM.** API set intended to be used directly by the application or middleware to generate Pulse Width Modulated signals.
- **SPI.** API set intended to be used directly by the application or middleware to communicate with the Serial Peripheral Interface (SPI) bus. SPI is sometimes called SSI (Synchronous Serial Interface).
- **SDSPI.** Driver for SD cards using a SPI (SSI) bus. This driver is used by the FatFS and not intended to be called directly by the application.

- **UART.** API set intended to be used directly by the application to communicate with the UART.
- **Watchdog.** API set intended to be used directly by the application or middleware to manage the watchdog timer.

1.7 For More Information

To see release notes for a component, go to the subdirectory for that component within the TI-RTOS products directory. For example,

`C:\ti\tirtos_simplelink_2_##_##_##\products\bios_6_40_##_##` contains release notes for SYS/BIOS.

To see user guide PDFs and other documentation for a component, go to the "docs" subdirectory within the directory that contains the release notes.

To learn more about TI-RTOS and its components, refer to the following documentation:

- **TI-RTOS**
 - [TI-RTOS User's Guide \(SPRUHD4\)](#)
 - [TI-RTOS on the Texas Instruments Wiki](#)
 - [TI-RTOS forum on TI's E2E Community](#)
 - [TI-RTOS Porting Guide](#)
 - [Embedded Software Download Page](#)
- **Code Composer Studio (CCS)**
 - [CCS online help](#)
 - [CCSv6 on the Texas Instruments Wiki](#)
 - [Code Composer forum on TI's E2E Community](#)
- **SYS/BIOS**
 - [SYS/BIOS User's Guide \(SPRUEX3\)](#)
 - SYS/BIOS API and configuration reference. In Resource Explorer (in CCS), choose the **Documentation Links** item for your version of TI-RTOS. In the Documentation Links page, choose the **TI-RTOS Kernel Runtime APIs and Configuration (cdoc)** item.
 - [SYS/BIOS on the Texas Instruments Wiki](#)
 - [TI-RTOS forum on TI's E2E Community](#)
 - [SYS/BIOS 6.x Product Folder](#)
- **XDCtools**
 - [SYS/BIOS User's Guide \(SPRUEX3\)](#)
 - XDCtools online reference. Open from CCS help or run `<xdc_install>/docs/xdctools.chm`.
 - [RTSC-Pedia Wiki](#)
 - [TI-RTOS forum on TI's E2E Community](#)
- **UIA**
 - [System Analyzer User's Guide \(SPRUH43\)](#)
 - UIA API and configuration reference. In Resource Explorer (in CCS), choose the **Documentation Links** item for your version of TI-RTOS. In the Documentation Links page, choose the **TI-RTOS Instrumentation Runtime APIs and Configuration (cdoc)** item.
 - [System Analyzer on the Texas Instruments Wiki](#)

- **FatFS API**
 - [Open source documentation](#)
 - [FatFS for SYS/BIOS wiki page](#)
 - SYS/BIOS API and configuration reference. In Resource Explorer (in CCS), choose the **Documentation Links** item for your version of TI-RTOS. In the Documentation Links page, choose the **TI-RTOS Kernel Runtime APIs and Configuration (cdoc)** item and see help under the ti.sysbios.fatfs.FatFS module topic.
- **General microcontroller information**
 - [Microcontrollers forum on TI's E2E Community](#)
- **SimpleLink resources**
 - [SimpleLink WiFi Overview](#)
 - [CC3100 Boosterpack](#)
 - [CC3100 WiFi SDK](#)
 - [CC31xx/CC32xx Main Wiki Page](#)
 - [CC31xx & CC32xx E2E Forum](#)
 - [CC3200 LaunchPad](#)
 - [CC3200 WiFi SDK](#)
 - [SimpleLink Wi-Fi CC3200 Audio BoosterPack](#)
 - [Camera BoosterPack for SimpleLink Wi-Fi CC3200 LaunchPad](#)
 - [SimpleLink WiFi Radio Tool](#)
 - [CC3200 Programmer's Guide \(SWRU369\)](#)
 - [CC3200 Technical Reference Manual \(SWRU367\)](#)
- **I²C**
 - [Specification](#)

Installing TI-RTOS

This chapter covers the steps to install TI-RTOS within Code Composer Studio or as a standalone software product.

Topic	Page
2.1 System Requirements	10
2.2 Installing Code Composer Studio	11
2.3 Installing TI-RTOS in Code Composer Studio	11
2.4 Installing TI-RTOS for Use in IAR Embedded Workbench	12
2.5 Installing TI-RTOS as a Standalone Product	12

2.1 System Requirements

The Microsoft Windows version of TI-RTOS can be installed on systems running Windows 8, Windows 7, Windows Vista, or Windows XP (SP2 or SP3).

The Linux version of TI-RTOS can be installed on systems that are running Linux RedHat v4 and higher or Ubuntu v10.04 and higher.

Separate versions of TI-RTOS are available for various Texas Instruments device families.

In order to install TI-RTOS, you must have at least 1 GB of free disk space. (If you have not yet installed Code Composer Studio, you will also need at least 4 GB of disk space for that installation.)

2.2 Installing Code Composer Studio

TI-RTOS is used in conjunction with Code Composer Studio 6.1 or higher. (TI-RTOS can also be used with the IAR Embedded Workbench IDE. See [page 12](#) for more information.) CCS is available for Microsoft Windows and Linux.

For Windows installations, we recommend that you install CCS in the default installation directory of `c:\ti`. If you install in `c:\Program Files` (or `c:\Program Files (x86)` with Windows 7), you are likely to run into problems related to Windows security permissions.

Note: Do not install CCS in a location that contains any spaces in the full path. For example, CCS should not be installed in `c:\Program Files`. Makefiles may not function correctly with directory paths that include spaces.

To install CCS 6.x, go to the ["Download CCS" page on the Texas Instruments wiki](#) and follow a link to download the software for your license type. For multi-user licenses, see the [CCS product page](#).

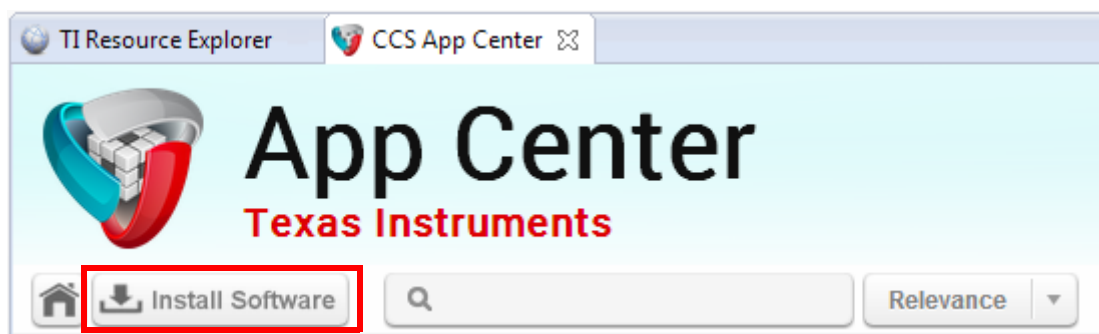
Run the installer, and answer the prompts as appropriate.

2.3 Installing TI-RTOS in Code Composer Studio

TI-RTOS is *not* installed automatically as part of the Code Composer Studio v6.x installation. Instead, you can install it through the CCS App Center as described in this section, for use in IAR Workbench as described in [Section 2.4](#), or as a standalone product as described in [Section 2.5](#).

Follow these steps to install TI-RTOS in CCS:

1. Run CCS v6.1 or higher.
2. Choose **View > CCS App Center** in CCS.
3. Select the version of TI-RTOS for your device family. If you use devices from multiple families, you can select multiple TI-RTOS versions.
4. Click the **Install Software** button near the top of the App Center view.



5. Answer the prompts as necessary to complete the TI-RTOS installation.
6. Restart CCS in order for TI-RTOS and its components to be available.

2.4 Installing TI-RTOS for Use in IAR Embedded Workbench

You can install TI-RTOS for use with IAR Embedded Workbench as follows:

1. Install IAR Embedded Workbench for Texas Instruments ARM devices. See [Section 1.4](#) for the supported versions of IAR Workbench.
2. [Download the Windows installer](#) for TI-RTOS for SimpleLink. For example, `tirtos_setupwin32_simplelink_2_##_##_##.exe`.
3. Run the downloaded file to install the full TI-RTOS product. You can install TI-RTOS in a standalone directory. Installing in a directory path that contains spaces, such as `C:\Program Files (x86)`, is not supported.

Note: TI-RTOS installs the core functionality of the XDCtools component if you have not already installed the necessary version as part of a CCS installation. TI-RTOS places XDCtools in a separate directory at the same level where you install TI-RTOS. For example, if the TI-RTOS installation directory is `C:\ti\tirtos_simplelink_2_##_##_##`, the XDCtools directory will be `C:\ti\xdctools_3_31_##_##_core`.

Follow the instructions in [Section 3.1.2](#) to complete the installation of the TI-RTOS examples. See [Section 3.2](#) to build the examples with the IAR compiler and to load and run the examples with IAR Embedded Workbench.

2.5 Installing TI-RTOS as a Standalone Product

If you do not use Code Composer Studio, you can install TI-RTOS as a standalone product. In addition to compiling and linking with the Texas Instruments Code Generation Tools, TI-RTOS includes support for the IAR and GNU tool chains (GNU is supported for CC3xxx only).

1. [Download the Windows or Linux installer](#) for TI-RTOS for the device family you use. For example, `tirtos_setupwin32_simplelink_2_##_##_##.exe` or `tirtos_setuplinux_simplelink_2_##_##_##.bin`.
2. Run the downloaded file to install TI-RTOS. You can install TI-RTOS in a standalone directory. Installing in a directory path that contains spaces, such as `C:\Program Files (x86)`, is not supported.

Note: TI-RTOS installs the core functionality of the XDCtools component if you have not already installed the necessary version as part of a CCS installation. TI-RTOS places XDCtools in a separate directory at the same level where you install TI-RTOS. For example, if the TI-RTOS installation directory is located in `C:\ti\tirtos_simplelink_2_##_##_##`, the XDCtools directory will be in `C:\ti\xdctools_3_31_##_##_core`.

Follow the instructions in [Section 3.1.2](#) to complete the installation of the TI-RTOS examples.

Examples for TI-RTOS

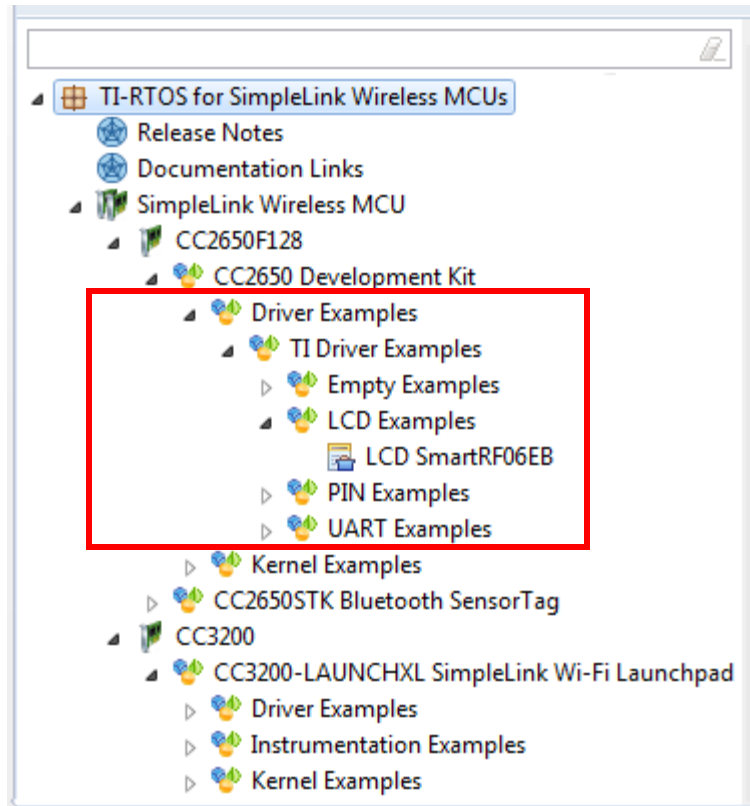
TI-RTOS comes with a number of examples that illustrate on how to use the individual components. This chapter explains how to create and use these examples.

Topic	Page
3.1 Creating Example Projects Using the Resource Explorer in CCS . .	14
3.2 Creating Examples with IAR Embedded Workbench.	18
3.3 Summary of Example Peripheral Use and Target Support	18
3.4 CC3200 SimpleLink LaunchPad Settings and Resources.	20
3.5 BoosterPacks	21
3.6 <Board>.c File and PinMux Tool Integration	23
3.7 Using Driverlib in ROM	25



3.1 Creating Example Projects Using the Resource Explorer in CCS

You can use the **Resource Explorer** in Code Composer Studio (CCS) to create example projects that use TI-RTOS and its components and have all the settings needed for your device. Follow these steps:

1. Open CCS. If you do not see the Resource Explorer, make sure you are in the **CCS Edit** perspective and choose **View > Resource Explorer (Examples)** from the menus.
2. Type the name or part of the name of your device in the **enter search keyword** field to hide all the examples that don't apply to your device. Or, you can type "Driver Examples" to find TI-RTOS driver examples.
3. Expand the tree until you see the examples for your device. Any **Driver Examples** listed are TI-RTOS driver examples. Any **Instrumentation Examples** listed are UIA examples. The **Kernel Examples** are the TI-RTOS Kernel (SYS/BIOS) examples. Resource Explorer provides TI-RTOS examples for both the TI and GNU tool chains.



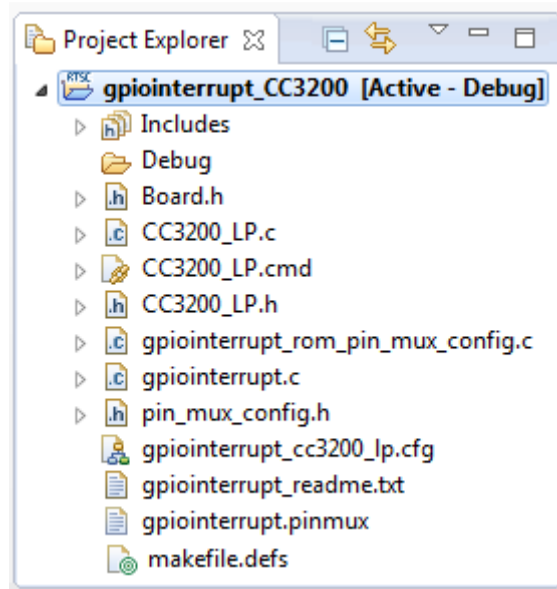
4. Select the example you want to create. A description of the selected example is shown to the right of the example list.
5. Click the **Step 1** link in the right pane of the Resource Explorer to **Import the example project into CCS**. This adds a new project to your Project Explorer view. Once you have completed a step for a particular example and device, a green checkmark will be shown next to that step.

Step 1:  [Import the example project into CCS](#) 



*Click on the link above to import the project. The imported project is available in the **Project Explorer** view, expand the project node to browse the imported source files. To modify source code, double clicks on the source file within the project to open the source file editor.*

Note: CCS will not allow two projects with the same name in a workspace. If you want to import both TI and GNU projects for the same board and example in the same workspace, you would need to rename the first project you import before importing the second version.

- The project created will have a name with the format `<example_name>_<board>`. You can expand the project to see the source code, configuration, and other files in the project.





- The page shown when you select an example in the Resource Explorer provides additional links to perform common actions with that example. Use the **Step 2** link when you are ready to build the project. If you want to change any build options, right click on the project and select **Properties** from the context menu. For example, you can change compiler, linker, and RTSC (XDCtools) options.

Step 2:  [Build the imported project](#) 

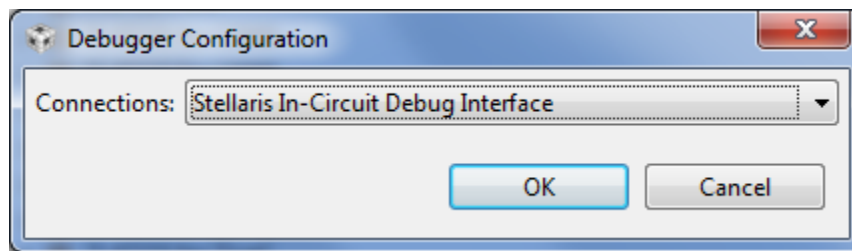
*To change build options, right click on the project and select **Properties** from the context menu. To build the project, select the link above, or select the **Build** toolbar button, or select the **Project | Build Project** menu item.*

- Use the **Step 3** link to change the connection used to communicate with the board. The current setting is shown in the Resource Explorer page for the selected example.



Step 3:  [Debugger Configuration](#) 

*Connection: **Spectrum Digital XDSPRO USB Emulator**
Click on the link above to change the device connection. Additionally, this option is also available in the project properties.*

9. You will see the Debugger Configuration dialog. Choose an emulator from the list. For CC32xx SimpleLink devices, choose the **Stellaris In-Circuit Debug Interface**.



10. Use the **Step 4** link to launch a debug session for the project and switch to the **CCS Debug Perspective**.

Step 4:  [Debug the imported project](#) 

*Click on the link above to launch a debug session for the **UART Echo** project and switch to the **CCS Debug Perspective**. Additionally, these are other methods to start a project debug session. Select the project in the **Project Explorer** view and click on the bug toolbar button. To relaunch a previous debug session, click on the small arrow beside the bug toolbar button and select one of the debug session from the history.*

3.1.1 Creating an Empty TI-RTOS Project

TI-RTOS provides blank projects you can use as a starting point for creating your own projects that utilize TI-RTOS. Both "Empty" and "Empty (Minimal)" versions are provided. The "Empty" version enables more kernel features and debug capabilities at the cost of large footprint. The "Empty (Minimal)" version disables various kernel features and debug capabilities to minimize the footprint. See the "Memory Usage with TI-RTOS" chapter in the [TI-RTOS User's Guide](#) (SPRUHD4) for details about techniques used to minimize the footprint.

Empty TI-RTOS driver projects can be created with the Resource Explorer (see [Section 3.1](#)).

After you create the example, the files in the empty project example include:

- Key C files: empty.c, <board>.c/.h
- Key configuration files: empty.cfg
- Linker command file: <board>.cmd

Add to the example as needed to implement your application.

3.1.2 Creating Examples to Build via a Command Line

TI-RTOS has a command-line utility called `examplesgen` that generates example projects along with the makefiles needed to build the examples for all supported tool chains—TI and IAR and GNU. The files are created in a location you specify on the command line. The `tirtos.mak` file in the top level directory of your TI-RTOS installation can be used to run `examplesgen`.

Note: If you installed TI-RTOS using the standalone installer ([Section 2.5](#) or [Section 2.4](#)), this step is not necessary because pre-generated examples are included as part of the installation for all supported boards and tool chains. The provided examples are located in the `TIRTOS_INSTALL_DIR\tirtos_simplelink_2_##_##_##_examples` directory. Pre-generated examples are not provided if you installed TI-RTOS through the CCS App Center.

You only need to perform these steps once:

1. If you installed TI-RTOS in a location other than the default location of `C:\ti`, edit the `tirtos.mak` file in the TI-RTOS installation directory. Modify the following variables as needed to make them point to the correct locations.
 - `DEFAULT_INSTALLATION_DIR`: Full path to the location where TI tools are installed.
 - `IAR_COMPILER_INSTALLATION_DIR`: Full path to the IAR code generation tools installation.
 - `GCC_INSTALLATION_DIR`: Full path to the GCC code generation tools installation.
 - `TIRTOS_INSTALLATION_DIR`: Full path to the TI-RTOS installation.
 - `XDCTOOLS_INSTALLATION_DIR`: Full path to the XDCtools installation.
2. If you plan to use TI-RTOS with IAR, set the `IAR_BUILD` variable in the `tirtos.mak` file to `true`.

```
IAR_BUILD ?= true
```

3. If you plan to use TI-RTOS with GCC, set the `GCC_BUILD` variable in the `tirtos.mak` file to `true`.

```
GCC_BUILD ?= true
```

4. Open a command line window, and use the following commands to run the `examplesgen` utility. (If you installed TI-RTOS in a protected directory, you should run the command window as the administrator.)

```
> cd <tirtos_install>
> ..\xdctools_3_31_##_##_core\gmake -f tirtos.mak examplesgen DEST="YOURPATH"
```

For the destination path, use a UNIX-style path. That is, use forward slashes (/) instead of backslashes (\). For example, `DEST="C:/myfiles"`.

The output from this command is a `tirtos_simplelink_2_##_##_##_examples` directory tree containing folders for the supported boards. Each board folder contains folders for all the examples available for that board.

Examples for TI and IAR and GNU are generated for boards supported by TI-RTOS. Each board directory contains a `makedefs` file that can be modified to specify other installation paths or compiler/linker options and a `makefile` that can be used to build all the examples for that board. Each example directory has its own `makefile` that can be used to build that example specifically.

3.2 Creating Examples with IAR Embedded Workbench

For information about using TI-RTOS examples with IAR Embedded Workbench, see the wiki page on [Creating TI-RTOS Applications in IAR Embedded Workbench](#) on the Texas Instruments wiki.

3.3 Summary of Example Peripheral Use and Target Support

The boards, components, and hardware used by the TI-RTOS examples are shown in the following table. Details about these examples are provided in the readme files in the example projects.

There are several example categories. The Empty and Empty (Minimal) projects are configured to make TI-RTOS available but do not contain specific code that uses TI-RTOS. The remaining examples show how to use a specific peripheral.

Table 3-1. TI-RTOS for SimpleLink Examples: Boards, Components, and Drivers

Example	CC3200 LaunchPad	TI-RTOS Kernel (SYS/BIOS)	SD Card / SDSPI	Camera	I ² C	I ² S	GPIO	Power	PWM	SPI	Watchdog Timer	WiFi ³	UART	UIA
Empty and Empty Minimal TI-RTOS Projects	X	X					X							X
FatSD: FatFs File Copy	X ¹	X	X				X							
FatSD Raw: FatFs File Copy using FatFs APIs	X ¹	X	X				X							
GPIO Interrupt	X	X					X							
I ² C TMP006	X ²	X			X		X							
I ² S Echo	X	X			X	X								
PWM LED	X	X					X		X					
UART Echo	X	X					X	X					X	X
UART Logging	X	X					X						X	X
UART Power	X	X					X	X					X	
Watchdog	X	X					X				X			

¹This example requires an SD Card reader BoosterPack.

²To use this example, close jumpers J2 and J3.

³Wireless examples for TI-RTOS are provided with the SimpleLink Wi-Fi CC3200 Software Development Kit (SDK). To access those examples, download the kit at <http://www.ti.com/tool/cc3200sdk>. For information about using the Wi-Fi examples in the SDK, see the [TI-RTOS CC3200Wireless wiki page](#).

3.3.1 **Readme Files and Common Driver Example Features**

There is a separate `<example_name>_readme` file for each of the examples. These files are added to your CCS project when you use the Resource Explorer to create a project. You can open the `<example_name>_readme` file within CCS. The `<example_name>_readme` files contain the following types of information:

- Actions performed by functions in the example.
- Hardware-specific descriptions of buttons, LEDs, etc...
- Which external components are (or may be) needed to run with particular examples.

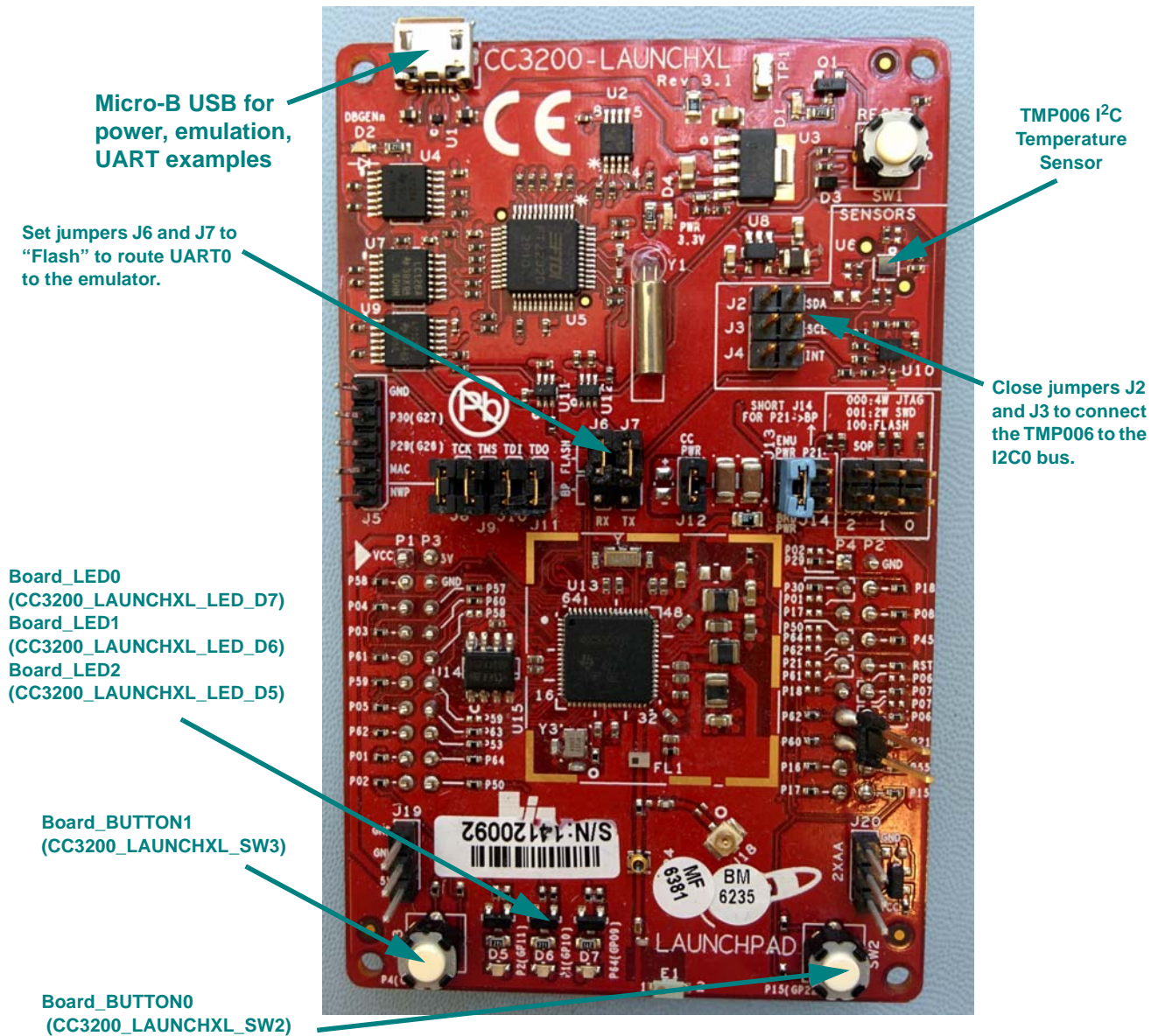
The Driver Examples share the following features:

- Most TI-RTOS driver examples use the SysMin System Support module. See the readme files in the individual example projects for details.
- The empty, demo, and most UART examples use the `ti.uia.sysbios.LoggingSetup` module with stop mode data collection. The UART Console example uses run-time data collection during Idle thread processing. For more details on data collection, see Chapter 2 of the [TI-RTOS User's Guide](#) (SPRUHD4).
- Driver Examples for a particular target all have the same `<board>.c` and `<board>.h` files. These files perform board-specific configuration of the drivers provided by TI-RTOS. For more details, see Chapter 4 of the [TI-RTOS User's Guide](#) (SPRUHD4).

The sections that follow list settings required to run the TI-RTOS examples on the supported boards. They also list the hardware resources that TI-RTOS and its dependent components use by default. Some of these resources offer flexible options, whereas others are fixed in the current design or implementation.

3.4 CC3200 SimpleLink LaunchPad Settings and Resources

The CC3200 SimpleLink LaunchPad contains a CC3200 device.



The Micro-B connector on the CC3200 LaunchPad can be used for power, debugger emulation, and UART communications.

Jumper Settings:

- To use the TMP006 I²C temperature sensor, close jumpers J2 and J3.
- To use the UART connected to the emulator, move jumpers J6 and J7 into the "flash" (2-3) position.

Switch Settings:

- SW2: Some examples use PIN 15 as a GPIO input.

- SW3: Some examples use PIN 04 as a GPIO input.

Resources Used:

- **TI-RTOS Kernel (SYS/BIOS).** Uses the Cortex M4's SYSTICK timer and that timer's associated interrupts. The TI-RTOS Kernel manages the Interrupt Vector Table.
- **TI-RTOS.**
 - **GPIOs.** The GPIO driver uses 3 output pins for the onboard LEDs and 2 input pins for switches SW2 (PIN 15) and SW3 (PIN 04).
 - **I²C.** The I²C driver is configured on I2CA0 to support various BoosterPacks or onboard peripherals.
 - **PWM.** The PWM driver uses the onboard LEDs D5 (PIN 02) and D6 (PIN 01). While these pins coincide with GPIO driver pins, they are configured for the PWM driver for the PWM examples. The GPIO driver APIs should not be used.
 - **SD Card.** Uses FatFs and the SDSPI driver on GSPI without interrupts to read and write to files.
 - **Serial.** The UART driver uses UARTA0, which is attached to the FTDI USB chip to facilitate serial communications.
 - **SPI.** The SPI driver uses GSPI for Board_SPI0 and LSPI for Board_SPI1.
 - **Watchdog.** The Watchdog example uses the Watchdog Timer and its associated interrupt.

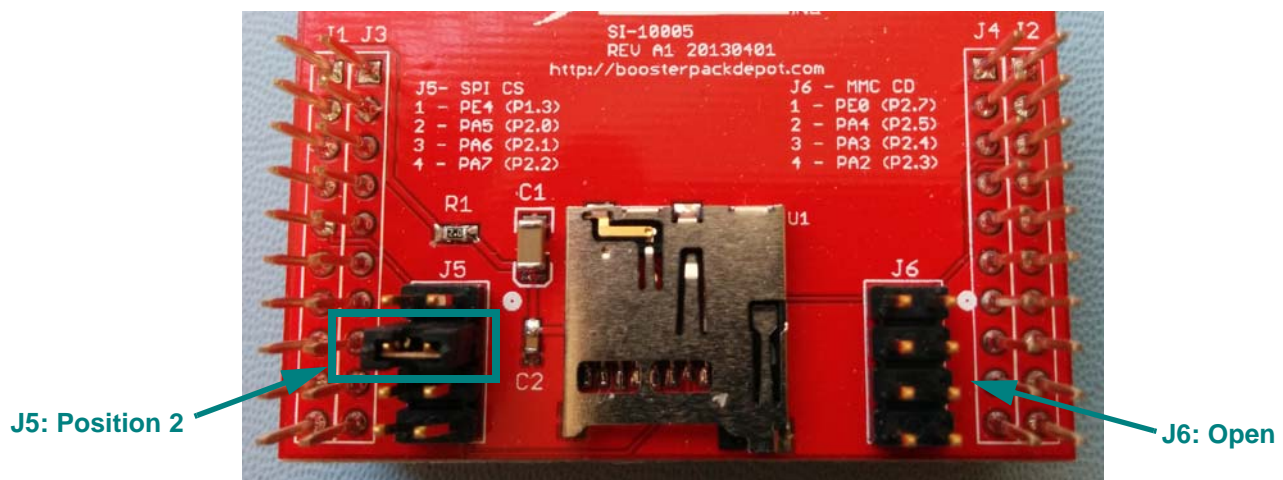
3.5 BoosterPacks

Several BoosterPack boards are used with the TI-RTOS examples. This section described those boards and provides any special notes about installing the board.

3.5.1 SD Card BoosterPack

A [microSD BoosterPack](#) or [SD Card BoosterPack](#) should be used with examples that require an SD Card reader on target boards that do not include an SD Card reader. This board may be used with the CC3200.

The figure below shows the jumper needed on the microSD BoosterPack to make it pin-compatible with the SD Card BoosterPack.



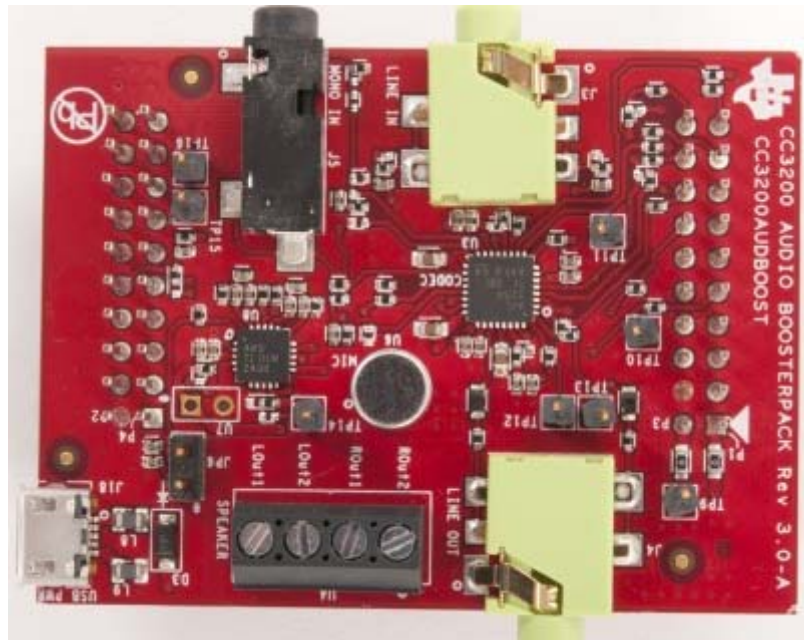
3.5.2 **TMP006 I²C Sensor**

While other boards require an additional TMP006 BoosterPack to run the I2CTMP006 example, the CC3200_LAUNCHXL board already has a TMP006 temperature sensor on the board. Simply close jumpers J2 and J3 on the LaunchPad to connect the TMP006 sensor to the I²C bus. Refer the picture in [Section 3.4](#) to see where these jumpers are located on the C3200 board.

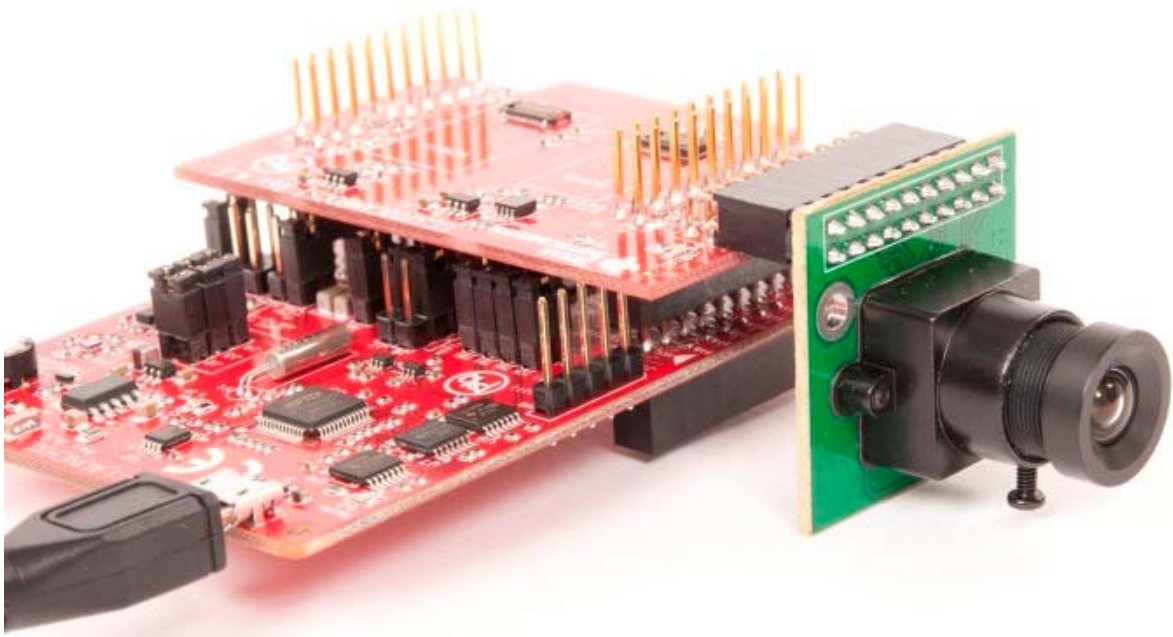
3.5.3 **CC3200 BoosterPacks**

The BoosterPacks add functionality to your SimpleLink board to support examples that require additional peripherals. The following BoosterPacks are supported for the CC3200.

- **Audio BoosterPack for SimpleLink Wi-Fi CC3200.** Use with the TI-RTOS I²S Echo example, which uses the I²S driver to echo back the audio received from the microphone over the speaker. See the user's guide for this BoosterPack ([SWRU383](#)) for details.



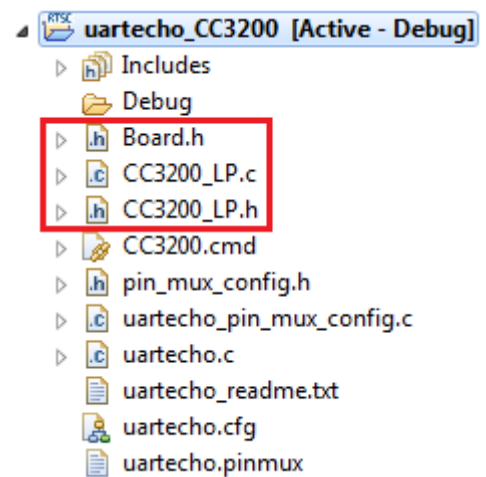
- **Camera BoosterPack for SimpleLink Wi-Fi CC3200 LaunchPad.** Use with the Camera example provided in the [SimpleLink Wi-Fi CC3200 Software Development Kit \(SDK\)](#).



3.6 <Board>.c File and PinMux Tool Integration

For every board supported in each TI-RTOS product, there are three common files that are used in all the driver examples.

- **Board.h.** This is a small shim file that allows example code (for example, uartecho.c) to be used on different boards in different TI-RTOS products.
- **<Board>.c/.h files.** For example, CC3200_LP.c and CC3200_LP.h in this picture. These files are specific to a board. The same files are used for all driver examples for that board.



For CC32xx, the TI PinMux Tool was used to generate the pinmux code for the TI-RTOS examples. You can install the TI PinMux Tool from the CCS App Center.

For example, the `pin_mux_config.h` and `uartecho_pin_mux_config.c` files were generated by the TI PinMux Tool based on the `uartecho.pinmux` project. The generated `pin_mux_config.c` file was renamed to `uartecho_pin_mux_config.c` so that the pinmux project and generated files for each driver example are uniquely named.

The <Board>.c file accommodates the use of the PinMux Tool. For example, the `Board_initGeneral()` function for the CC3200 is as follows, where the `PinMuxConfig()` function is in the generated `uartecho_pin_mux_config.c` file).

```
void CC3200_LAUNCHXL_initGeneral(void)
{
    PinMuxConfig();
}
```

The pinmux code is removed from the peripheral initialization function. For example in the `CC3200_LAUNCHXL_initI2C` function makes only the driver initialization call:

```
void CC3200_LAUNCHXL_initI2C(void)
{
    I2C_init();
}
```

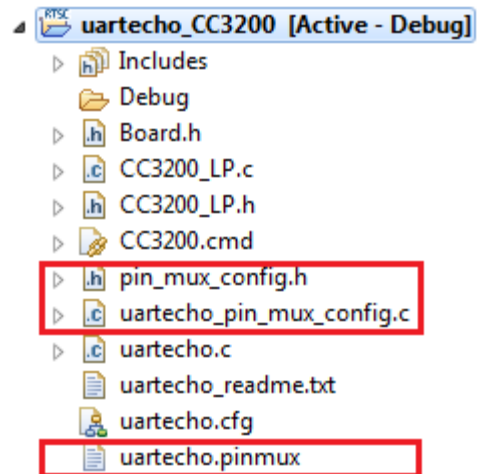
When peripherals are added or removed, the driver configuration structures in the <Board>.c/.h files must be manually changed. For example if an additional I²C is added, the following structures in `CC3200_LAUNCHXL.c` must be manually updated (as well as the enums in the `CC3200_LAUNCHXL.h` file):

```
I2CCC3200_Object i2cCC3200Objects[ CC3200_LAUNCHXL_I2CCOUNT ];

/* I2C configuration structure */
const I2CCC3200_HWAttrs i2cCC3200HWAttrs[ CC3200_LAUNCHXL_I2CCOUNT ] = {
    { I2CA0_BASE, INT_I2CA0 }
};

const I2C_Config I2C_config[] = {
    { &I2CCC3200_fxnTable, &i2cCC3200Objects[0], &i2cCC3200HWAttrs[0] },
    { NULL, NULL, NULL }
};
```

Please refer to Section 5.2, "Driver Framework" in the *TI-RTOS User's Guide* for details on managing these structures.



Note that a #if directive in the <Board>.c file is used to include or exclude initialization code. For example

```
#if TI_DRIVERS_I2C_INCLUDED
#include <ti/drivers/I2C.h>
#include <ti/drivers/i2c/I2CCC3200.h>
#include <driverlib/i2c.h>

I2CCC3200_Object i2cCC3200Objects[CC3200_LAUNCHXL_I2CCOUNT];

...

void CC3200_LAUNCHXL_initI2C(void)
{
    I2C_init();
}

#endif /* TI_DRIVERS_I2C_INCLUDED */
```

The #defines are generated and set to 1 when a driver is included by the .cfg file. It is set to 0 when the driver is not included in the .cfg file.

3.7 Using Driverlib in ROM

The ROM on the CC3200 rev 1.33 includes a version of driverlib. By default, TI-RTOS drivers (such as UART and SDSPI) and examples do not use this ROM version of driverlib. Instead they link with driverlib functions in the <tirtos_install_dir>/products/CC3200_driverlib_<version>/driverlib library. However, both the TI-RTOS drivers and examples call MAP_xyz driverlib functions with the same names and calling syntax as those in ROM. They can thus be rebuilt to use the ROM functions (as described in the rest of this section).

To use the driverlib functions in ROM, you will need to define TARGET_IS_CC3200 and rebuild both the TI-RTOS driver libraries and the application. Follow these steps to perform the necessary builds:

1. Edit the <tirtos_install_dir>\tirtos.blk file and add TARGET_IS_CC3200 into the ccOpts definition as follows:

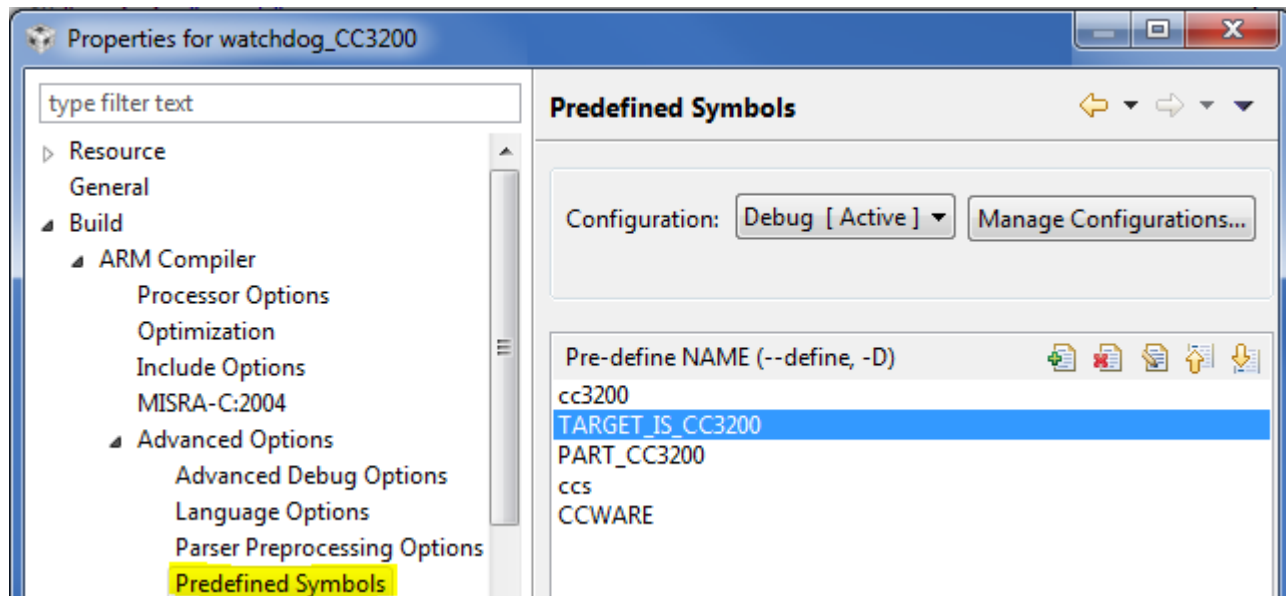
```
var ccOpts = {
    "ti.targets.arm.elf.M4" : " -ms -g --gcc --define=ccs -DTARGET_IS_CC3200 ",
    "iar.targets.arm.M4"   : " -Dewarm -DIAR -DTARGET_IS_CC3200 ",
    "gnu.targets.arm.M4"   : " -g -D gcc -DTARGET_IS_CC3200 ",
};
```

2. Rebuild the driver libraries as explained in the “Rebuilding TI-RTOS” chapter in the TI-RTOS User Guide (SPRUHD4). For example:

```
% ..\<xdctools>\gmake -f tirtos.mak drivers
```

3. Define TARGET_IS_CC3200 for builds of the application project.

In CCS or IAR you can modify the project properties to add the predefined symbol. For example for project that uses a TI compiler within CCS, you can choose **Project > Properties** from the menus and go to the **Build > ARM Compiler > Advanced Options > Predefined Symbols** category to add TARGET_IS_CC3200 to the list of Pre-defined names.



If you are not using an IDE, add TARGET_IS_CC3200 to the makedefs file in the generated command-line examples. For example, this command line for the TI compiler includes the symbol definition (in bold).

```
CFLAGS = -mv7M4 --code_state=16 --abi=eabi -me -DPART_CC3200 -g
--display_error_number --diag_warning=255 --diag_wrap=off -DTARGET_IS_CC3200
-Dccs -DCCWARE -I$(CCWARE_INSTALLATION_DIR) -I$(CCWARE_INSTALLATION_DIR)/inc
-I$(CCWARE_INSTALLATION_DIR)/driverlib
```

4. Rebuild your application.

Configuring TI-RTOS

This chapter describes how to configure TI-RTOS and its components for use by your application.

Topic	Page
4.1 Starting the Configuration Tool	28
4.2 Configuring TI-RTOS Drivers	29
4.3 Configuring Components of TI-RTOS	30

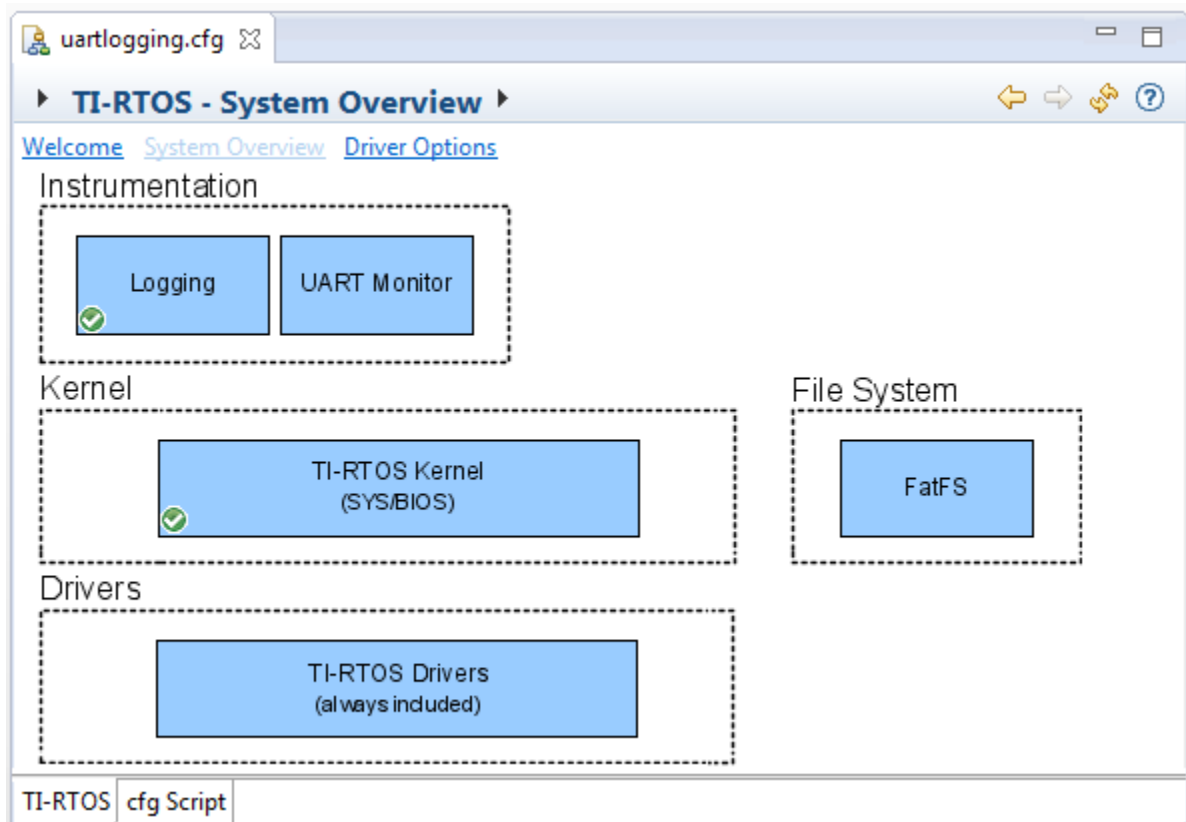
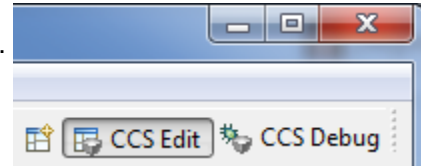
4.1 Starting the Configuration Tool

Note: The graphical configuration tool is not available within IAR Embedded Workbench. If you are using IAR, edit the project's *.cfg file within IAR as a text-based source file. See the [Texas Instruments Wiki](#) for more about using IAR with TI-RTOS.

This section shows how to open the Graphical Configuration Tool (XGCONF) to view the System Overview. For details on using XGCONF, see Chapter 2 of the [SYS/BIOS User's Guide \(SPRUEX3\)](#).

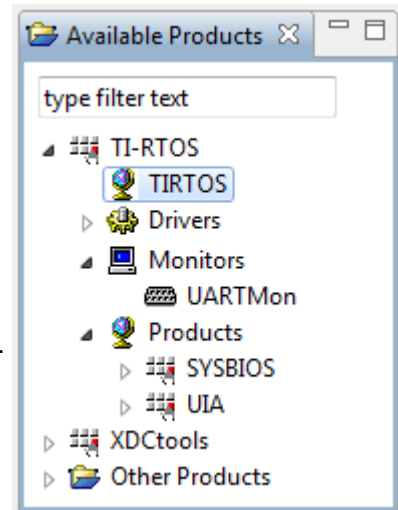
To use CCS to open the graphical tool for editing configuration files (XGCONF), follow these steps:

1. Make sure you are in the **CCS Edit** perspective of CCS. If you are not in that perspective, click the CCS Edit icon to switch back.
2. Double-click on the *.cfg configuration file for a TI-RTOS example project in the **Project Explorer** tree. (See [Section 3.1](#) if you need to create an example project.) While XGCONF is opening, the CCS status bar shows that the configuration is being processed and validated.
3. When XGCONF opens, you see the **Welcome** sheet for TI-RTOS if you are using a Driver example. (If this is the configuration file for a Kernel example or an Instrumentation example, the Welcome sheet for SYS/BIOS opens first, instead.) The Welcome sheet provides links to documentation resources.
4. Click the **System Overview** link to see a diagram of the components available through TI-RTOS. (SYS/BIOS modules are shown if you are using a Kernel example or an Instrumentation example.) A green check mark indicates which modules are being used by the application.



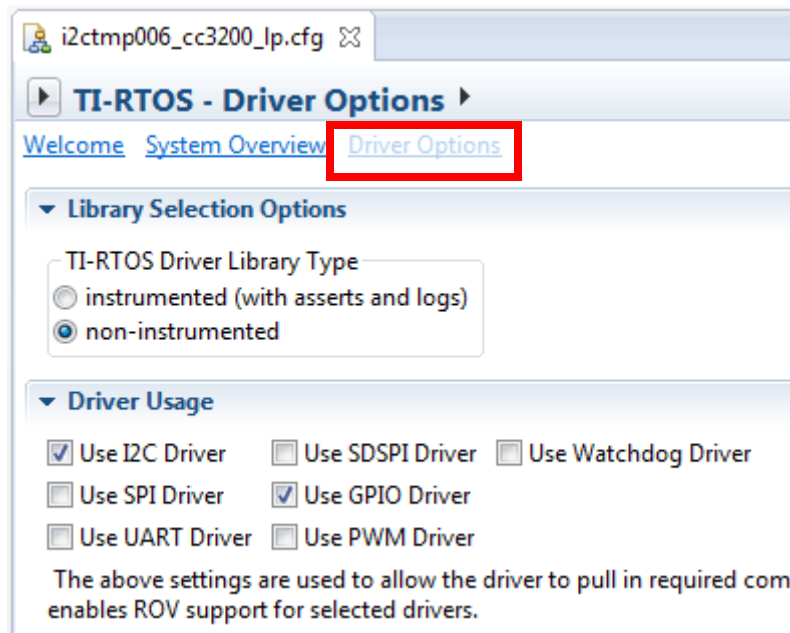
5. You also see a list of Available Products in a pane on the left of the CCS window. This list allows you to select the TIRRTOS module and any configurable modules in the products TI-RTOS provides.
6. Click a blue box in the System Overview to go to the configuration page for a module.

Note: If the configuration is shown in a text editor instead of XGCONF, close the text editor window. Then, right-click on the *.cfg file and choose **Open With > XGCONF**. If you are comfortable editing configuration scripts with a text editor, you can do that. However, you should not have the file open in both types of editor at the same time.



4.2 Configuring TI-RTOS Drivers

In the System Overview display for the TIRRTOS module, select the **Driver Options** link.



You can choose to use either the instrumented or non-instrumented driver libraries when linking with TI-RTOS. The instrumented libraries process Log events while the non-instrumented libraries do not. See the section on "Using Instrumented or Non-Instrumented Libraries" in the *TI-RTOS User's Guide* (SPRUHD4) for more information. This setting affects all the TI-RTOS drivers listed in [Section 1.6](#) together.

Check the boxes for any drivers your application will use. For most drivers, this is the only configuration necessary. Enabling the drivers here also enables the instrumentation provided to the RTOS Object View (ROV) plugins.

4.2.1 Configuring System Support

The SysCallback module lets you configure the functions that handle System output—for example, System_printf() and System_abort(). This module handles transmissions to System output only; it does not handle responses received. See the chapter on "TI-RTOS Utilities" in the *TI-RTOS User's Guide* (SPRUHD4) for more about the SysCallback module.

Other SystemSupport implementations are provided with XDCtools.

- **SysMin** stores System_printf() strings in an internal buffer in RAM. SysMin requires RAM, so it not ideal for devices with minimal RAM.
- **SysStd** writes System_printf() strings to STDOUT (the CCS Console window). By default, SysStd allows System_printf() to be called from Tasks only (not Swis or hardware interrupts); it can be modified to allow calls from Swis and Hwis, but this impacts real-time performance.

4.3 Configuring Components of TI-RTOS

For information about configuring individual sub-components of TI-RTOS, see the documentation for that component. Chapter 2 of the [SYS/BIOS User's Guide \(SPRUJEX3\)](#) provides details about XGCONF. Within XGCONF, you can see the full file path to the version of the component being used by hovering your mouse cursor over a component in the "Other Products" list in the **Available Products** area.

The Resource Explorer (in CCS) lets you access documentation for all the components of TI-RTOS. Choose the **Documentation Links** item for your version of TI-RTOS. Use the configuration reference documentation, and click the "Configuration settings" link at the top of each page to skip to the configuration information.

Index

A

App Center 11
Available Products list 29

B

BoosterPacks 21
SD Card 21

C

Camera driver 7
CC3200 LaunchPad 7
CCS
 creating a project 6, 14
 installation 11
 other documentation 8
CCS App Center 4, 11
components 5
Concerto
 other documentation 9
configuration 27
 graphical editor 28

D

disk space 10
documentation 8

E

Empty Project example 16
empty.c file 16
examples 13
 overview 18

F

FatFs API, documentation 9
forum 8

G

GPIO driver 7
 examples 18
 resources used 21

I

I2C driver 7
 example 18
I2S driver 7
installation
 CCS 11
 directory 11
instrumentation 5
instrumented libraries 29

K

kernel examples 6

L

LEDs
 managed by GPIO driver 7
LoggingSetup module 19

N

non-instrumented libraries 29

P

products directory 5
PWM driver 7
 examples 18

R

readme.txt file 19
Resource Explorer 6, 14

S

SD Card BoosterPack 21
SD driver, example 18
SDSPI driver 7
SimpleLink SDK 5
SPI driver 7
 examples 18
SYS/BIOS 5
 examples 18
 other documentation 8
SysCallback module, configuration 30
SysMin module 19
System Overview configuration 28
system requirements 10

U

UART driver 8
 examples 18

UIA 5
 example 18
 other documentation 8

W

Watchdog driver 8
 examples 18
WiFi driver
 examples 18
wiki 8

X

XDCtools 5
 other documentation 8
XGCONF
 configuring other components 30
 starting 28

IMPORTANT NOTICE

Texas Instruments Incorporated and its subsidiaries (TI) reserve the right to make corrections, enhancements, improvements and other changes to its semiconductor products and services per JESD46, latest issue, and to discontinue any product or service per JESD48, latest issue. Buyers should obtain the latest relevant information before placing orders and should verify that such information is current and complete. All semiconductor products (also referred to herein as “components”) are sold subject to TI's terms and conditions of sale supplied at the time of order acknowledgment.

TI warrants performance of its components to the specifications applicable at the time of sale, in accordance with the warranty in TI's terms and conditions of sale of semiconductor products. Testing and other quality control techniques are used to the extent TI deems necessary to support this warranty. Except where mandated by applicable law, testing of all parameters of each component is not necessarily performed.

TI assumes no liability for applications assistance or the design of Buyers' products. Buyers are responsible for their products and applications using TI components. To minimize the risks associated with Buyers' products and applications, Buyers should provide adequate design and operating safeguards.

TI does not warrant or represent that any license, either express or implied, is granted under any patent right, copyright, mask work right, or other intellectual property right relating to any combination, machine, or process in which TI components or services are used. Information published by TI regarding third-party products or services does not constitute a license to use such products or services or a warranty or endorsement thereof. Use of such information may require a license from a third party under the patents or other intellectual property of the third party, or a license from TI under the patents or other intellectual property of TI.

Reproduction of significant portions of TI information in TI data books or data sheets is permissible only if reproduction is without alteration and is accompanied by all associated warranties, conditions, limitations, and notices. TI is not responsible or liable for such altered documentation. Information of third parties may be subject to additional restrictions.

Resale of TI components or services with statements different from or beyond the parameters stated by TI for that component or service voids all express and any implied warranties for the associated TI component or service and is an unfair and deceptive business practice. TI is not responsible or liable for any such statements.

Buyer acknowledges and agrees that it is solely responsible for compliance with all legal, regulatory and safety-related requirements concerning its products, and any use of TI components in its applications, notwithstanding any applications-related information or support that may be provided by TI. Buyer represents and agrees that it has all the necessary expertise to create and implement safeguards which anticipate dangerous consequences of failures, monitor failures and their consequences, lessen the likelihood of failures that might cause harm and take appropriate remedial actions. Buyer will fully indemnify TI and its representatives against any damages arising out of the use of any TI components in safety-critical applications.

In some cases, TI components may be promoted specifically to facilitate safety-related applications. With such components, TI's goal is to help enable customers to design and create their own end-product solutions that meet applicable functional safety standards and requirements. Nonetheless, such components are subject to these terms.

No TI components are authorized for use in FDA Class III (or similar life-critical medical equipment) unless authorized officers of the parties have executed a special agreement specifically governing such use.

Only those TI components which TI has specifically designated as military grade or “enhanced plastic” are designed and intended for use in military/aerospace applications or environments. Buyer acknowledges and agrees that any military or aerospace use of TI components which have not been so designated is solely at the Buyer's risk, and that Buyer is solely responsible for compliance with all legal and regulatory requirements in connection with such use.

TI has specifically designated certain components as meeting ISO/TS16949 requirements, mainly for automotive use. In any case of use of non-designated products, TI will not be responsible for any failure to meet ISO/TS16949.

Products

Audio www.ti.com/audio
Amplifiers amplifier.ti.com
Data Converters dataconverter.ti.com
DLP® Products www.dlp.com
DSP dsp.ti.com
Clocks and Timers www.ti.com/clocks
Interface interface.ti.com
Logic logic.ti.com
Power Mgmt power.ti.com
Microcontrollers microcontroller.ti.com
RFID www.ti-rfid.com
OMAP Mobile Processors www.ti.com/omap
Wireless Connectivity www.ti.com/wirelessconnectivity

Applications

Automotive and Transportation www.ti.com/automotive
Communications and Telecom www.ti.com/communications
Computers and Peripherals www.ti.com/computers
Consumer Electronics www.ti.com/consumer-apps
Energy and Lighting www.ti.com/energy
Industrial www.ti.com/industrial
Medical www.ti.com/medical
Security www.ti.com/security
Space, Avionics and Defense www.ti.com/space-avionics-defense
Video & Imaging www.ti.com/video
TI E2E Community e2e.ti.com